

A V I V A

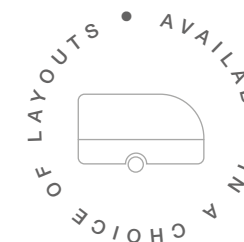
A new style of camping.



AVIVA

Aviva, the European Innovation award-winner is such an original, comfortable and easy caravan to own and to use. Elegantly designed stylish interior, packed with innovative features and with a choice of soft furnishings.

Experience a new style of camping.



360 DD

360 DK

400 DK

400 PS

442 PH

472 PK

492 LU

522 PT

563 PT

Exterior features

Aviva brings an innovative, new style to camping thanks to its combination of space, comfort and practical features.



1 Exclusive exterior design and graphics.

2 Exclusive, innovative and flexible front storage compartment.

3 GFK body with embossed aluminium sidewalls.

4 AL-KO chassis.

5 Integrated tent profile and third stop light.

6 LED awning light.

7 Adria chrome handles.

Interior features



I. Elegant interior living spaces, with choice of soft furnishings.

II. Innovative, exclusive storage solutions.

III. Loudspeakers, Bluetooth® amplifier, USB ports.

IV. Comfortable sleeping in a choice of bed formats.

V. Smart kitchen with 2 or 3 burners, 90 or 140l fridge (varies by layout).

VI. Bathroom, with toilet, shower, sink & 'to go' accessories.

VII. Truma heating & electrical floor heating (optional).





VIEW
ONLINE

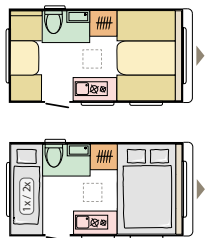
Discover 360° walkthroughs,
layouts, specification technical data
and our product configurator at
www.adria-mobil.com


Aviva offers a whole new style of camping, with its many innovative features and stylish yet ultimately simple solutions, in the kitchen, bathrooms all wrapped up in a robust and highly practical caravan.

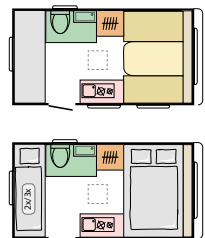



AVIVA LAYOUTS

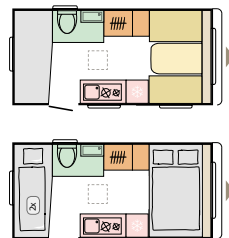
360 DD
 L 4142 (mm) | 
 W 2090 (mm) | 3




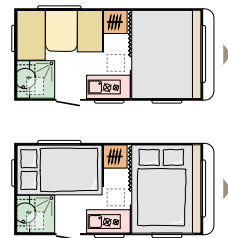
360 DK
 L 4142 (mm) | 
 W 2090 (mm) | 4+1 opt.




400 DK
 L 4492 (mm) | 
 W 2090 (mm) | 4+1 opt.




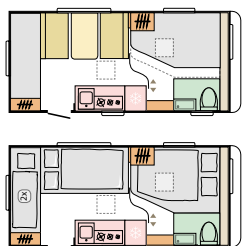
400 PS
 L 4492 (mm) | 
 W 2090 (mm) | 4



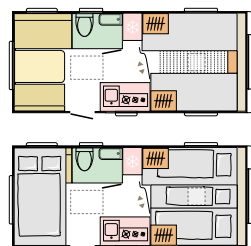
442 PH
 L 4872 (mm) | 
 W 2300 (mm) | 4




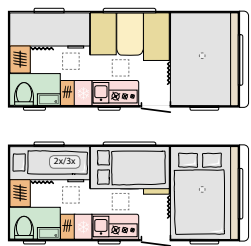
472 PK
 L 5174 (mm) | 
 W 2300 (mm) | 6




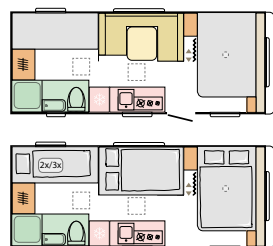
492 LU
 L 5384 (mm) | 
 W 2300 (mm) | 5



522 PT
 L 5664 (mm) | 
 W 2300 (mm) | 6+1 opt.



563 PT
 L 6154 (mm) | 
 W 2450 (mm) | 6+1 opt.



KEY features

- Exclusive exterior design and graphics.
- Exclusive, innovative front storage compartment.
- Solid body in polyester with embossed aluminium sidewalls.
- AL-KO chassis.
- Elegant interiors and new soft furnishing choices.
- Innovative, exclusive storage solutions.
- Loudspeakers, Bluetooth® amplifier & USB ports.
- Comfortable sleeping in a choice of bed formats.
- Stylish privacy curtain.
- Smart kitchen with 3 burners and best appliances.
- Bathroom, with toilet, shower, sink & 'to go' accessories.
- Pre-installation for air-conditioning.

KEY options

- Truma heating, Trumavent and floor heating (by layout).
- Kid's Pack option on selected layouts.

SOFT furnishings

Selection of textiles and decorative cushion sets.

Discover more at www.adria-mobil.com

TEXTILE selection

BAHIA (standard)



FLORIAN



ROBYN



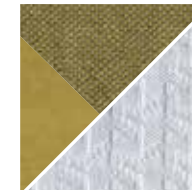
OLIVIA



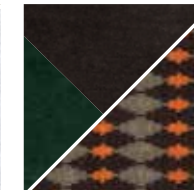
DREAM HARMONY



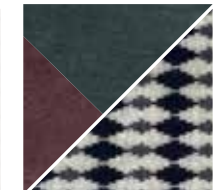
SUMMER VIBES



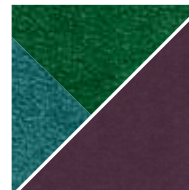
BROWNIES



GREY PLANET



MYSTIC GARDEN



WARM BROWNS

