

ALPINA

The ultimate all-seasons caravan.





# ALPINA

Alpina, our premium caravan range, for all year-round use, now with new graphics and with improvements to the Ergo bathroom and water installations. A best-seller with its combination of eye-catching design, large panoramic window, contemporary spacious interiors, great performance and new soft furnishings.

*The premium all-seasons caravan.*



583 LP

613 UT

663 HT

663 PT

663 UK

753 HK

753 HT

753 UP

763 UK

903 HT



Adria MACH smart  
control mobile app.

# Exterior features

The Alpina is a best-seller in the colder climates of Scandinavia and now right across Europe, thanks to its high specification and all-year round performance.



**1** Adria 'Comprex' construction with additional floor insulation.

**2** Exclusive design with new graphics and wide entrance door.

**3** Exterior rear LED lights with curtain technology.

**4** Extra-large panoramic window on most layouts.

**5** Seitz DeLuxe windows with integrated mosquito net and roller blinds.

**6** AL-KO chassis.



**7** Continental tyres and new Adria alu wheel design.



**360° WALKTHROUGH**  
Step inside Alpina, take a 360° Walkthrough on [www.adria-mobil.com](http://www.adria-mobil.com)

## Interior features



**I.** Large elegant living spaces for atrium-style living.

**II.** Optimized storage including concave design deep cupboards.

**III.** User-friendly solutions including Bluetooth® amplifier, USB ports.

**IV.** Rich, controllable lighting system for different ambiance.

**V.** Smart kitchen with home comfort and the best appliances.

**VI.** New Ergo bathroom with improved water installations.

**VII.** Alde integrated heating.







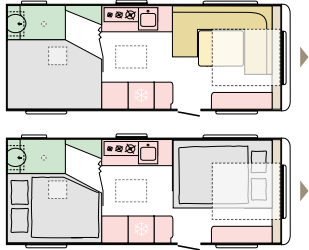
Alpina provides true loft-style living unlike any other caravan, with extra-large living spaces and a stylish, luxury ambiance. It's also a highly practicable and robust caravan packed with features.




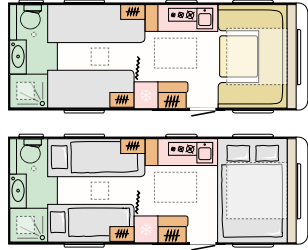
# ALPINA LAYOUTS

ALPINA

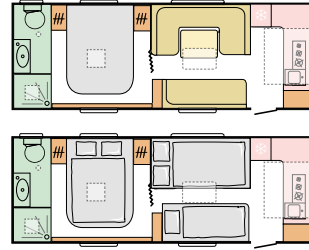
**583 LP**  
 L 6411 (mm) |   
 W 2460 (mm) | 4



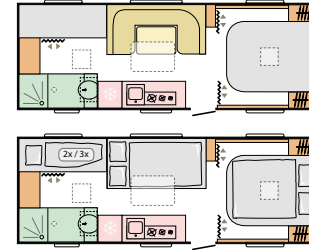
**613 UT**  
 L 6761 (mm) |   
 W 2460 (mm) | 4



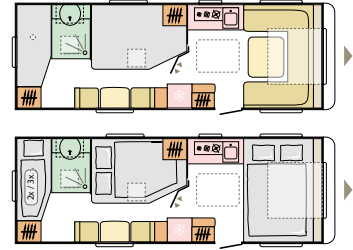
**663 HT**  
 L 7281 (mm) |   
 W 2460 (mm) | 5



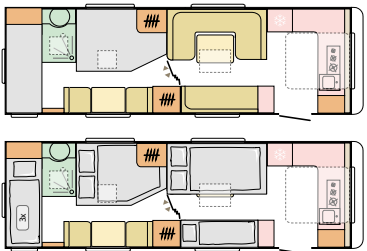
**663 PT**  
 L 7251 (mm) |   
 W 2460 (mm) | 6/7



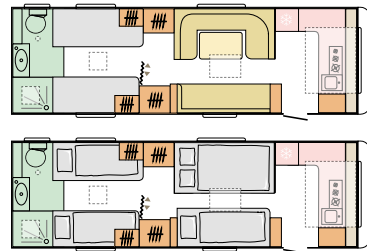
**663 UK**  
 L 7232 (mm) |   
 W 2460 (mm) | 6/7



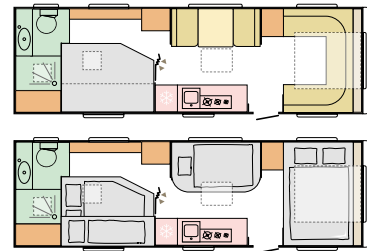
**753 HK**  
 L 8091 (mm) |   
 W 2460 (mm) | 7/8



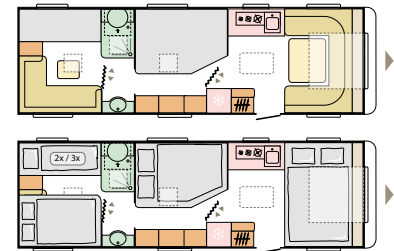
**753 HT**  
 L 8091 (mm) |   
 W 2460 (mm) | 5



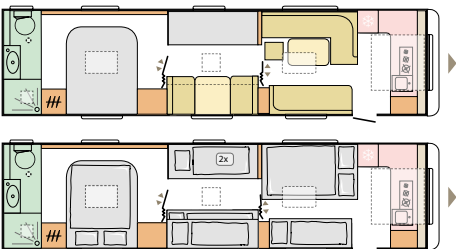
**753 UP**  
 L 8110 (mm) |   
 W 2460 (mm) | 6



**763 UK**  
 L 8236 (mm) |   
 W 2460 (mm) | 8/9



**903 HT**  
 L 9533 (mm) |   
 W 2460 (mm) | 9





**KEY** features

- Exclusive exterior design with new graphics.
- 'Comprex' body construction and 600mm wide entrance door.
- Exterior LED lights with curtain technology.
- Seitz DeLuxe windows with integrated mosquito net and roller blinds.
- AL-KO chassis on all models.
- Large living spaces, with elegant interiors and soft furnishing choices.
- Extra-large panoramic window on most layouts.
- Comfortable bedrooms with a selection of bed formats.
- Optimized storage including concave design deep cupboards.
- User-friendly solutions including Bluetooth® amplifier, USB ports.
- Easy fold-out bunk bed solution on selected layouts.
- Controllable lighting system for different ambiance.
- Smart kitchen with 3 burners and best appliances.
- New Ergo bathroom with improved water installations.
- Alde integrated heating.

**KEY** options

- Adria MACH smart control mobile app.
- Factory-fitted air Conditioning.
- Choice of soft furnishings.

**NEW** soft furnishings

There's a wide choice of soft furnishings and cushion colourways available for a much more personal style – yours!

Go to [www.adria-mobil.com](http://www.adria-mobil.com) for more information and vehicle applicability.

**TEXTILES** selection

POMMERY



MORGAN



EDGAR



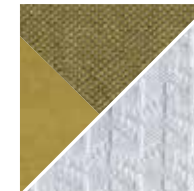
L. MATTHIASE



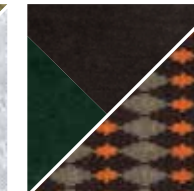
DREAM HARMONY



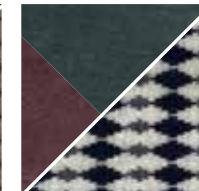
SUMMER VIBES



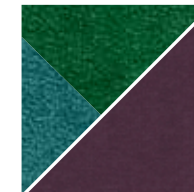
BROWNIES



GREY PLANET



MYSTIC GARDEN



WARM BROWNS

